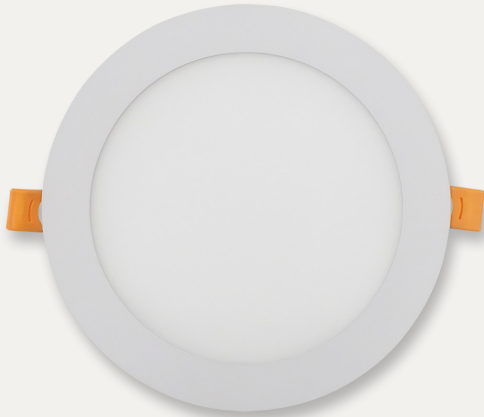


PROJECT	NOTES	TYPE	DATE	CAT. No.
---------	-------	------	------	----------



LRE

LED Recessed Edge-Lit Round Panel

The CCT Adjustable LRE Series LED Downlight provides high-quality light output and efficiency featuring a switch for easy color temperature adjustment - while eliminating the need for recessed housings. The innovative, slim design allows for retrofit, remodel or new construction installation from below the ceiling. The LED module maintains at least 70% light output for 50,000 hours. The LRE Series is wet location listed - making it ideal for use in a breadth of outdoor residential, hospitality, commercial and multifamily applications.

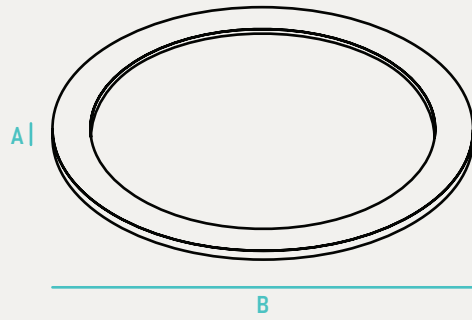


INPUT VOLTAGE	120V
INPUT FREQUENCY	50/60 Hz
RATED WATTAGE	See Performance Data
DELIVERED LUMENS	See Performance Data
EFFICACY	>70 LPW (typ.)
CRI	90
AVAILABLE CCT	2700K, 3000K, 3500K, 4000K, 5000K
LENS TYPE	Plastic

RATED LIFE	50,000hrs (Based on 3hrs a Day)
L70	>50,000hrs
POWER FACTOR	>0.9
THD	<20%
DIMMING	Triac Dimming
OPERATING TEMP.	-4°F - 113°F / -20°C to 45°C
BEAM ANGLE	N/A

ORDER INFO / EXAMPLE: LRE-4-10-120D-927/50-WH

SERIES	DIAMETER	RATED WATTAGE	DRIVER TYPE	COLOR TEMP	FINISH
LRE	4	10	120D	27/50	WH
LRE LED Recessed Edge-Lit Round Panel	4-4" 6-6"	4" Housing 10- 10W, 600 Lumens 6" Housing 15- 15W, 1000 Lumens	120D- 120V Dimming, 10-100%, Triac Dimming	927/50- 2700K, 3000K, 3500K, 4000K, 5000K Selectable; 90CRI	WH- White
OPTIONS / ACCESSORIES					
FDLB- Fixed Bracket for 4" & 6" LRE ADLB- Adjustable Bracket for 4" & 6" LRE					



	A	B	Case QTY
LRE-4	1.1" H	4.7" Dia	20
LRE-6	1.1" H	6.6" Dia	20

CONSTRUCTION

Aluminum die cast outer frame. Durable powder coat paint to prevent rust. FT4 plenum rated cable connector to connect from module to remote driver box. IC rated driver with convenience and value of two remote selectable color temperature options, each with a setting choice to choose either 2700K, 3000K, 3500K, 4000K, 5000K using the switch. The isolated driver integrated inside steel remote box with four 7/8" knockouts with slots for pryout. Suitable for pulling wires with the 12 cubic-inch wiring compartment to accommodate up to (6) 14 gauge insulated conductors; making the LRE Series LED Downlights much easier to wire in 2in/2out (plus ground) daisy-chain applications and contractor friendly.

ELECTRICAL

Equipped standard with 120V, 10-100% dimming driver.

QUALIFICATIONS

All luminaires are built to UL 1598 and 2108 standards, and bear appropriate ETL labels. Wet location labeling is standard. Emergency equipped fixtures labeled UL924. Suitable for closets according to NEC Section 410.8 & 410.16. Adheres to LM70, LM80 and TM21 industry standards. Dedicated 120V Models are FCC Title 47 CFR, Part 15, Class B for residential and commercial applications.

INSTALLATION

Ideal for shallow ceiling plenum; no housing required. Steel spring clip for easy installation. 6" cut out template is provided to ensure a correct sized hole is cut into ceiling for proper installation of the trim. Size of hole should not exceed 6-1/4" for this product. Suitable for installation in t-grid and drop ceiling applications. 2" plenum space required for installation of the remote driver box.

WARRANTY

3-year Limited Warranty. See warranty documentation for more info.

PERFORMANCE DATA

FORM FACTOR	KELVIN	RATED WATTAGE	DELIVERED LUMENS	EFFICACY (LM/W)
4"	27K-5K	10W	600	60
6"	27K-5K	15W	1000	66

QUICK SHIP

LRE-4-10-120D-927/50-WH

LRE-6-15-120D-927/50-WH

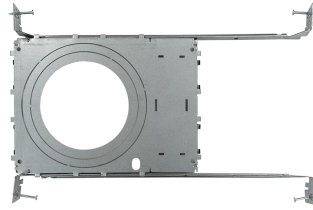
ADDITIONAL IMAGES



RECOMMENDED DIMMERS

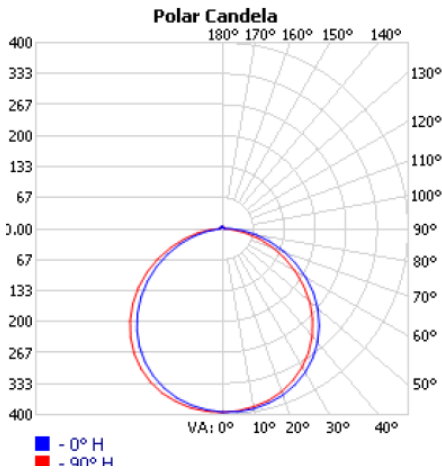
DVCL-153P (Lutron)

ACCESSORIES



PHOTOMETRIC DATA

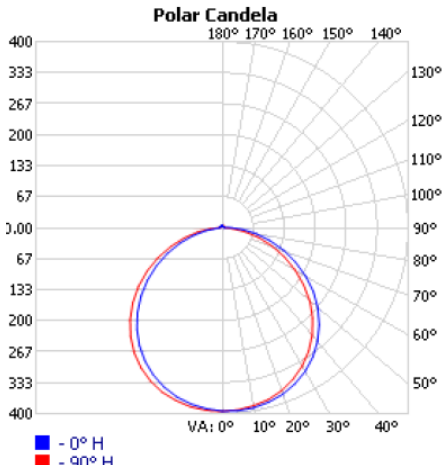
LRE-6-15-120D-927/50



Zonal Lumen Summary

Zone	Lumens	% Lamp	% Luminaire
0-30	311.4	25.6%	25.6%
0-40	514.7	42.3%	42.2%
0-60	921.3	75.6%	75.6%
60-90	269.8	22.2%	22.1%
70-100	127.1	10.4%	10.4%
90-120	14.4	1.2%	1.2%
0-90	1,191.2	97.8%	97.8%
90-180	27.4	2.2%	2.2%
0-180	1,218.5	100%	100%

LRE-6-15-120D-927/50



Zonal Lumen Summary

Zone	Lumens	% Lamp	% Luminaire
0-30	311.4	25.6%	25.6%
0-40	514.7	42.3%	42.2%
0-60	921.3	75.6%	75.6%
60-90	269.8	22.2%	22.1%
70-100	127.1	10.4%	10.4%
90-120	14.4	1.2%	1.2%
0-90	1,191.2	97.8%	97.8%
90-180	27.4	2.2%	2.2%
0-180	1,218.5	100%	100%

Made to order items. Minimum 90 day lead time. Minimum order quantity may vary please contact sales.

¹ DLC Listed / ² DLC Premium Listed / ³ Title 24 / ⁴ JA8 & Title 24 / Typical color consistency. May vary or be changed.

L70 hours calculated based on LED package manufacturer LM80 report and ISTMT report of LED in luminaire. Stated values are for select catalog numbers. Contact Globalux for detailed information. / Actual performance may differ as a result of end-user environment and application. All values are design or typical values, measured under laboratory conditions at 25 °C.